

## The Studio Programs

The Studio offers a variety of in-person programs, to get you started on a new project or take your skills to the next level!



Scan the code to see current programs at The Studio.



## The Studio Open Hours

Come tinker, collaborate, create, and get your next project off the ground during open Studio hours. Dates and times are subject to change. Machines are first-come, first-served.

### MAIN LIBRARY

(260) 421-1245, after 1 PM

#### Monday – Thursday

1 – 9 PM

#### Friday

1 – 6 PM

#### Saturday

10 AM – 6 PM

#### Sunday

NOON – 5 PM

### GEORGETOWN

(260) 421-1320 x4407

#### Monday & Wednesday

10 AM – 1 PM

#### Tuesday

5 – 8 PM

#### Thursday & Saturday

2 – 5 PM

### The Studio is now at HESSEN CASSEL, PONTIAC, and SHAWNEE.

For hours & more information,  
contact the branch.

#### HESSEN CASSEL

(260) 421-1330

#### PONTIAC

(260) 421-1350

#### SHAWNEE

(260) 421-1355

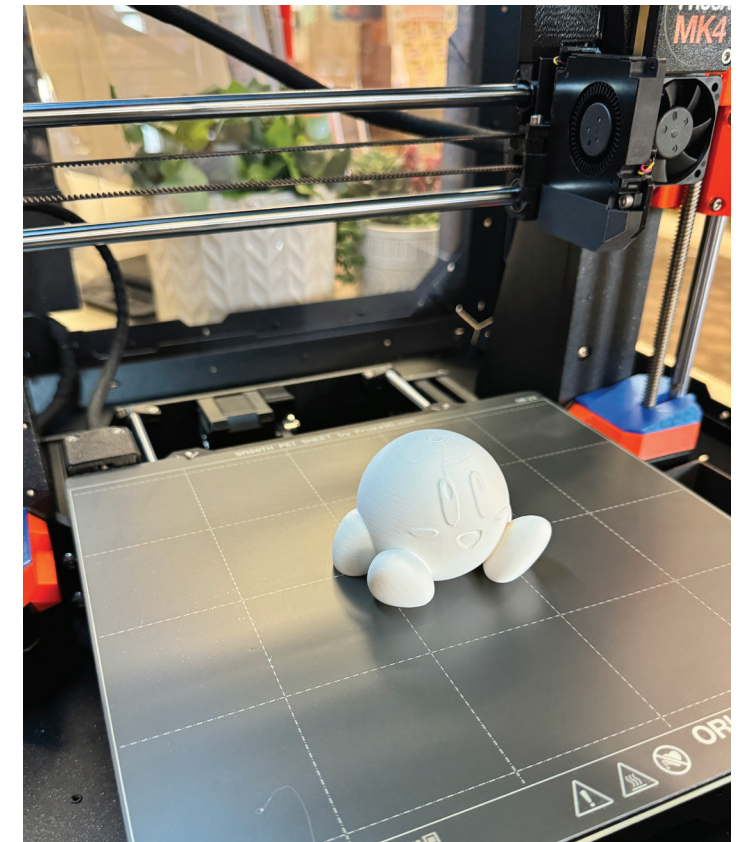
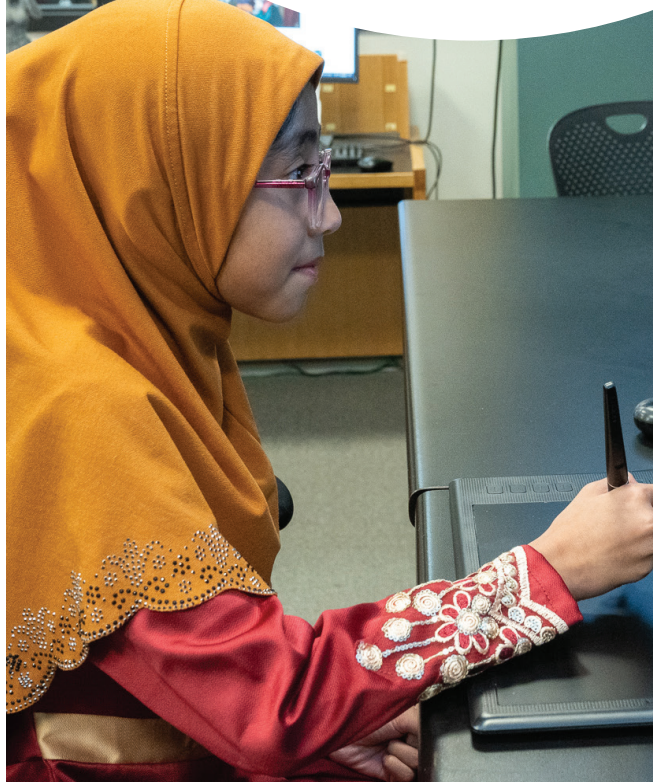


For more information,  
scan the code or visit  
[acpl.info/thestudio](http://acpl.info/thestudio)



## Allen County Public Library

@AllenCountyLibrary @acpl\_insta



## Allen County Public Library

## What is The Studio?

The Studio at the Library provides access to technology and equipment for individuals to learn new skills, collaborate with friends, create content, and connect with our knowledgeable guides.



## What's Available?

### MACHINES

3D Pens (M)  
3D Printer (G) (HC) (M) (P) (S)  
Button Maker (HC) (P) (S)  
Cricut Autopress (HC) (M) (P) (S)  
Cricut Bright Pad (G) (HC) (M) (P) (S)  
Cricut Maker (G) (HC) (M) (P) (S)  
DC Power Supply (M)  
Dremel Rotary Tool (M)  
Dremel Rotary Tool and Workstation (G) Glowforge  
Laser Printer (G)  
Hot Air Rework (M)  
Irons/Ironing Boards (G) (M)  
Laminator (HC) (P) (S)  
Meccano Mecca Spider (M)  
Oscilloscope (M)  
Parallax Activity Bot (M)  
Photo Scanner (M)  
Sewing Machine (G) (HC) (M) (P) (S)  
Silhouette Cutter (G) (M)  
Soldering Iron (M)  
Sound Booth (M)  
Sparkfun Kits (M)  
VHS to DVD Station (M)

(G) - Georgetown (HC) - Hessen Cassel (M) - Main  
(P) - Pontiac (S) - Shawnee

### SOFTWARE

123D Design  
Adobe Acrobat  
Adobe Creative Cloud  
(Photoshop, Illustrator, Camera Raw, Indesign)  
Arduino  
Blender  
Cricut Design Space  
FL Studio  
Makerbot Print  
Meshmixer  
Power BI  
Prusa Slicer  
Silhouette Studio

### LAPTOPS & DEVICES

Arturia MiDi Controller Keyboards (M)  
Desktop Computers (M)  
Disc Reader (M)  
Floppy Disc Reader (M)  
Huion Inspiroy Drawing Tablet (M)  
iPads (G)  
PC Laptops (G) (HC) (P) (S)  
Wacom Intuos Drawing Tablets (G)

Patrons are to bring their own materials for projects except for filament for the 3D printers.

## The Studio Rules & Guidelines

### PREPARE

- Safety is top priority – never distract someone who is using a tool or machine.
- Only use tools after you have been properly trained.
- Sign in before using any equipment.
- All minors (17 and under) who would like to use The Studio must have a participation release signed by a parent/guardian on file. Children in sixth grade or younger must be directly supervised by a parent/guardian.

### DRESS TO PROTECT

- Do not wear loose-fitting clothing around machinery.
- Tie back or cover long hair.
- Wear only shoes that cover your whole foot – no sandals.
- Always wear eye protection when working with machinery.

### USE TOOLS CORRECTLY

- Use tools only as they were designed to be used.
- Never use a broken tool and report any broken or malfunctioning tools/machinery immediately.
- Do not remove tools from The Studio space.
- Operate machines only with all safety guards and shields in place.

### CLEAN UP

- Clean up every time you leave an area, including sweeping the floor.
- Clean and return tools to their proper places.
- Keep the floor dry and free of any trip hazards.

